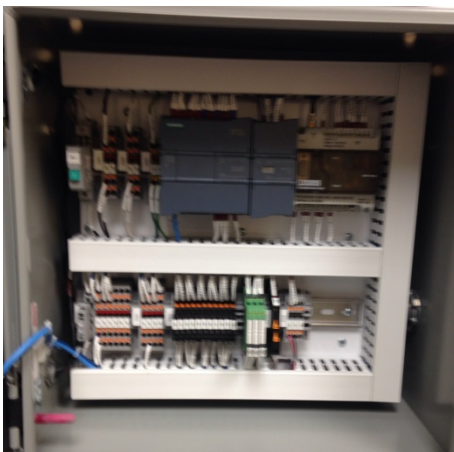
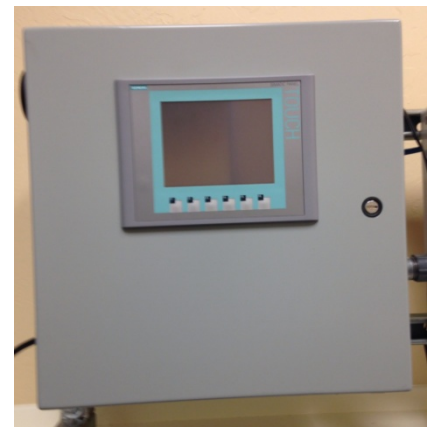




BLOC's Electrical and Instrumentation Division provides, installs, troubleshoots, upgrades, programs and services all your SCADA needs!

THE ROC

BLOC's Remote Open source Controller (ROC) is an integrated off the shelf Programmable Logic controller (PLC) with expansion capabilities used to operate a wide range of motor control sites more efficiently and economically. System is pre programmed per customer specifications allowing more efficient installation saving time and money. All components are standard off the shelf products that can be purchased from most standard electronics distributors eliminating long lead times and the use of proprietary hardware and software giving the end user the ability to get competitive pricing for service. The system has been designed for easy trouble shooting with visual failure indicators, three sources of surge protection, Easy to read electrical schematics and wire identification on all wires and terminal blocks. This allows for easy troubleshooting by an experienced operator. All panels meet all UL508A certification



requirements. As a low cost option we have added an Operator Touch Screen interface giving the operator an easy way to control and troubleshoot a station. The Basic ROC can be used as a standalone controller that can easily be upgraded into an auto dialer, SMS messenger, Cellular Data, LAN or wireless Ethernet as well as a licensed or unlicensed radio telemetry SCADA system.

Highlights:

- PLC (Allen Bradley, Siemens, Modicon, or Phoenix Contact)
- Capable of multiple communication protocols
- Three source surge protection
- UL508A certified
- Can easily be integrated into existing SCADA systems or work as a standalone unit
- All components can be purchased from local electronic distributors
- Easy troubleshooting with visual identifiers

We provide these services and more as your General Contractor, Electrical Contractor, SCADA Contractor or as a Design-Build Contractor

BLOC Design is a Licensed Electrical Contractor TDLR No. 26335

Contact us at 903-247-9444